



VIRGINIA TECH.

Corporate Research Center

#SpaceWithPurpose

2000 Kraft Drive, Suite 1000  
Blacksburg, VA 24060  
vtcrc.com

Contact:  
Pat Morris  
information@vtcrc.com  
(540) 961-3600



## THE PROPERTY

Lease rate includes: General office electric use, water, sewer, external maintenance, and housekeeping

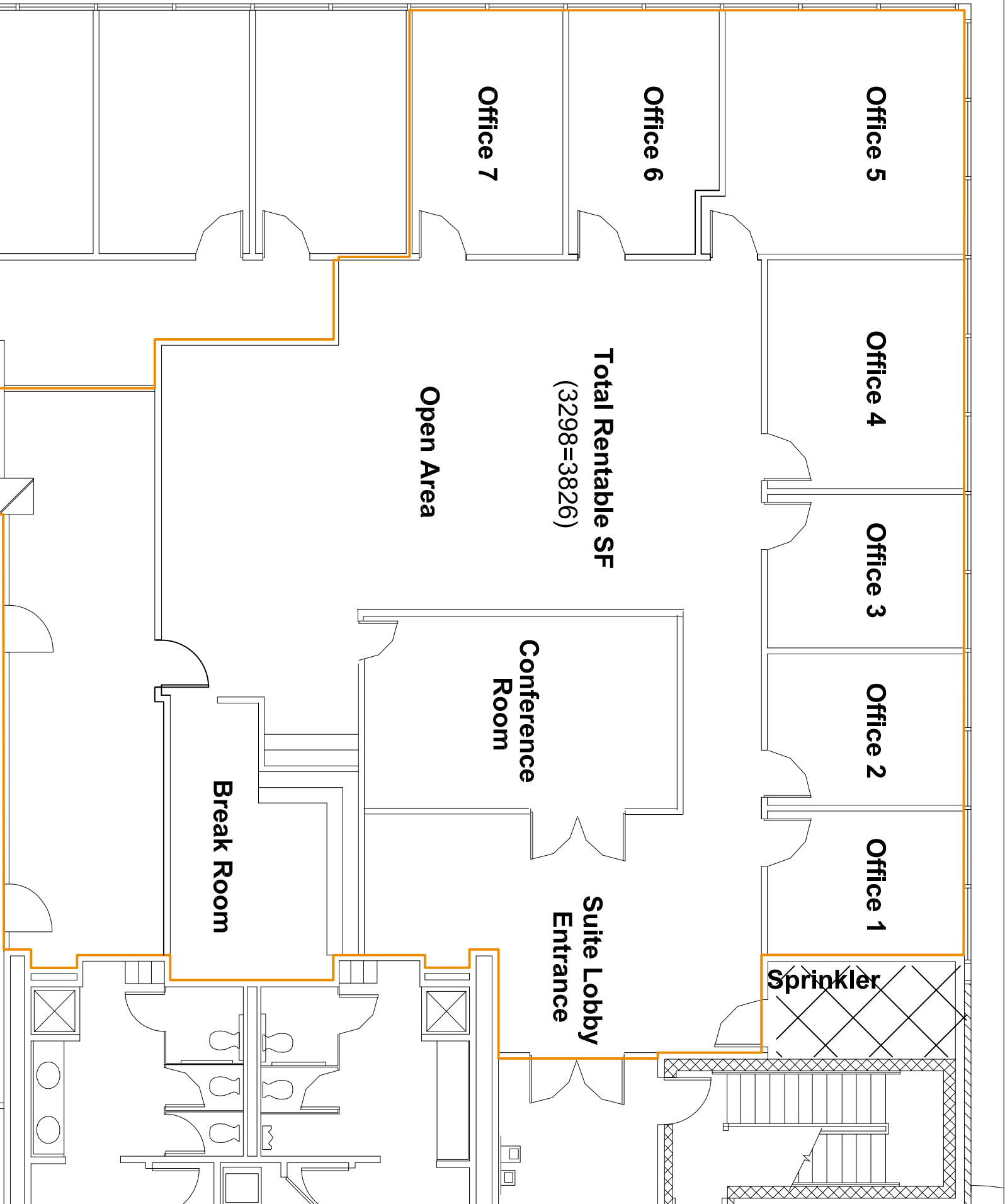
- Ample parking
- Two conference rooms and mail room with sink

The research park is located in a HUBzone and adjacent to Virginia Tech and the Virginia Tech Montgomery Executive Airport, plus...

- Priority enrollment with Rainbow Riders child care, restaurant, Yoga and Pilates studios, gym, trails, disc golf, additional conference rooms, Training & Event Center, and more.
- On-site VUE apartments opening summer 2022



Drone footage of phase I Kraft Drive



Office 5

Office 6

Office 7

Office 4

Office 3

Office 2

Office 1

Total Rentable SF  
(3298=3826)

Open Area

Conference Room

Break Room

Suite Lobby Entrance

Sprinkler